

## Welcome Messages

Dear Colleagues,

We would like to welcome you to the 9th annual meeting of the Society of Gastrointestinal Intervention (SGI) to be held in Seoul, Korea, on October 2-3, 2015.

Since its foundation, the SGI has focused the program on the latest development in the GI to be discussed at its annual meetings.

The scientific program of SGI 2015 will provide a forum for a lot of debate about the treatment methods used in gastroenterology, interventional radiology and surgery. Especially, from this year, we are newly organizing each session to more actively communicate along with expanding the SGI field by extending the line of hepatic oncology; therefore, we hope SGI 2015 will provide you with an excellent opportunity for a useful exchange of information.

Besides, with implementation of SGI Edelweiss Scholarship program being arranged for young doctors who come from developing countries, the symposium is expected to maximize their participation and interest, which will turn out an ideal place for their education and communication.

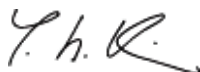
At this point of time, when the 10th anniversary of SGI Symposium is expected next year, we are intending from this year to prepare for another oncoming decade. There will be many people from a variety of medical fields to attend this symposium, which we hope to become a unique meeting with the help of their interest and advice, all seeking for the development of definite scientific knowledge based on the latest medical technology, and with minds yielding and encouraging each other on behalf of the patients.

Participants attending our annual meeting will not only benefit from the exciting educational program but also have an opportunity to experience the cultural and historical heritage of Korea during its most beautiful season. Also our social programs will help them to strengthen our old friendship.

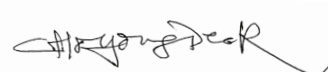
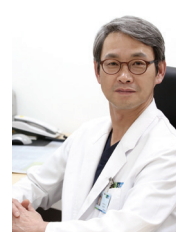
Thank you.



Ziv J. Haskal  
President SGI 2015



Yun Hwan Kim  
Secretary General SGI 2015



Young Deok Cho  
Vice Secretary General SGI 2015

## SGI 2015 Organizing Committee

### SGI Executive Committee

President	Ziv J. Haskal	University of Virginia	USA
Secretary General	Yun Hwan Kim	Korea University Anam Hospital	Korea
Vice Secretary General	Young Deok Cho	Soonchunhyang University Hospital	Korea
Audit Committee Co-chairs	Byung Hee Lee	Korea Cancer Center Hospital	Korea
	Sang-Uk Han	Ajou University Hospital	Korea
Treasury Committee	Hyung Jin Shim	Chung-Ang University Hospital	Korea

### Scientific Program Committee

Chair	Hans-Ulrich Laasch	The Christie NHS Foundation Trust	UK
Co-chairs	Kenneth Binmoeller	CPMC	USA
	Jin-Hyeok Hwang	Seoul National University Bundang Hospital	Korea
	Hwanhoon Chung	Korea University Ansan Hospital	Korea
Members	Sang Bu Ahn	Dongnam Inst. of Radiological & Medical Sciences	Korea
	Seungmin Bang	Yonsei University Severance Hospital	Korea
	Jae-Hee Cho	Gachon University Gil Medical Center	Korea
	Sung Ki Cho	Samsung Medical Center	Korea
	Ho Jong Chun	The Catholic University of Korea Seoul St. Mary's Hospital	Korea
	Sung Sik Han	National Cancer Center Hospital	Korea
	Hyun Pyo Hong	Kangbuk Samsung Hospital	Korea
	Nam Gyoo Jang	St. Carollo Hospital	Korea
	Ung BaeJeon	Pusan National University Yangsan Hospital	Korea
	Hyun-Soo Jung	Yonsei University Severance Hospital	Korea
	Do Young Kim	Yonsei University Severance Hospital	Korea
	Jaihan Kim	Seoul National University Bundang Hospital	Korea
	Jin-Hyoung Kim	Asan Medical Center	Korea
	Jinoo Kim	Ajou University Hospital	Korea
	Sang-Gyun Kim	Seoul National University Hospital	Korea
	Yeul Hong Kim	Korea University Anam Hospital	Korea
	Se Hwan Kwon	Kyung Hee University Medical Center	Korea
	Hyuk Lee	Samsung Medical Center	Korea
	In Joon Lee	National Cancer Center Hospital	Korea
	Jeong Hoon Lee	Asan Medical Center	Korea
	Sang Hyub Lee	Seoul National University Hospital	Korea
	Sang Soo Lee	Asan Medical Center	Korea
	Deok Ho Nam	G Sam Hospital	Korea
	Auh Whan Park	University of Virginia	USA
	Young Soo Park	Seoul National University Bundang Hospital	Korea
	Dong Hoon Yang	Asan Medical Center	Korea
	Yoshitaka Inaba	Aichi Cancer Center Hospital	Japan
	Takao Itoi	Tokyo Medical University	Japan

### Liaison Committee

Co-chairs	Hyun-Ki Yoon	Asan Medical Center	Korea
	Jong-Kyun Lee	Samsung Medical Center	Korea
Members	Tiing Leong Ang	Changi General Hospital	Singapore
	Yasuaki Arai	National Cancer Center Hospital	Japan
	Mariano E. Gimenez	Hospital de Clinicas University of Buenos Aires	Argentina
	Bing Hu	Eastern Hepatobiliary Hospital, Second Military Medical University	China
	Hiroyuki Isayama	The University of Tokyo	Japan
	Arthur Kaffes	Royal Prince Alfred Hospital	Australia
	James Y. Lau	The Chinese University of Hong Kong	Hong Kong
	DongKi Lee	Yonsei University Gangnam Severance Hospital	Korea
	Jeffrey Lee	MD Anderson Cancer Center	USA

## SGI 2015 Organizing Committee

### Liaison Committee

Members	Lydia Theresia Purba Nageshwar Reddy Rungsun Rerknimitr Hany Shehab Hyung Jin Shim Peter Siersema Hsiu-Po Wang Ren-jie Yang	National Cardiovascular Center, Harapan Kita Asian Institute of Gastroenterology Chulalongkorn University Cairo University Chung-Ang Univeristy Hospital Universitair Medisch Centrum Utrecht National Taiwan University Hospital, Yun-Lin Branch Peking Univeristy Cancer Hospital	Indonesia India Thailand Egypt Korea The Netherlands Taiwan China
---------	--	--	--

### Meeting & Exhibition Committee

Co-Chairs	Kenjiro Yasuda Okan Akan Hong Shan Sung Bum Jo	Kyoto Second Red Cross Hospital Ankara University The Third Affiliated Hospital, Sun Yat-sen University Korea University Anam Hospital	Japan Turkey China Korea
Member	Yozo Sato	Aichi Cancer Center Hospital	Japan

### Publicity Committee

Co-Chairs	Hans-Ulrich Laasch Jeffrey Lee Woo Jin Lee Deok Ho Nam	The Christie NHS Foundation Trust MD Anderson Cancer Center National Cancer Center Hospital G Sam Hospital	UK USA Korea Korea
-----------	---	---	-----------------------------

### Editorial Committee

Co-Editors-in-Chief	Todd H. Baron Ziv J. Haskal	The University of North Carolina at Chapel Hill University of Virginia	USA USA
Co-chairs	Woo Jin Lee Dong Il Park Ji Hoon Shin	National Cancer Center Hospital Kangbuk Samsung Hospital Asan Medical Center	Korea Korea Korea
Associate Editors	Yasuaki Arai Kyung J. Cho Seung Kwon Kim Hans-Ulrich Laasch Jeffrey Lee Katherine A. Morgan Peter Siersema Oscar A. Alvarez Jennifer Chennat Sung Ki Cho Wojciech Cwikiel Mariano E. Gimenez Ho Seong Han Joung-Ho Han Shayan Irani Hiroyuki Isayama Gyoo-Sik Jung Yunho Jung Krishna Kandarpa Clive Kay Eun Young Kim Jin Hong Kim Jin Hyoung Kim Se Hwan Kwon Jun Kyu Lee	National Cancer Center Hospital University of Michigan Washington University The Christie NHS Foundation Trust MD Anderson Cancer Center Medical University of South Carolina (MUSC) Universitair Medisch Centrum Utrecht South Texas Gastroenterology Associates University of Pittsburgh Medical Center Samsung Medical Center University of Michigan Hospital Hospital de Clinicas University of Buenos Aires Seoul National University Hospital Bundang Chungbuk National University Hospital Virginia Mason Medical Center The University of Tokyo Kosin University College of Medicine Soonchunhyang University Cheonan Hospital Weill-Cornell School of Medicine Bradford Teaching Hospitals Daegu Catholic University Medical Center Ajou University Hospital Asan Medical Center Kyung Hee University Hospital Dongguk University Ilsan Hospital	Japan USA USA UK USA USA The Netherlands USA USA Korea USA USA Korea Argentina Korea Korea USA Japan Korea Korea USA USA UK USA Korea Korea Korea

## SGI 2015 Organizing Committee

### Editorial Committee

---

Members	Jun Kyu Lee	Dongguk University Ilsan Hospital	Korea
	Andrew Lowe	Bradford Teaching Hospitals	UK
	John Maple	University of Oklahoma, Health Sciences Center	USA
	Derrick Martin	South Manchester University Hospital Foundation NH5 Trust	UK
	Alexander Meining	II. Medizinische Klinik und Poliklinik	Germany
	Jong Ho Moon	Soonchunhyang University Bucheon Hospital	Korea
	Jae Jun Park	Yonsei University Gangnam Severance Hospital	Korea
	M. Perez-Miranda	Hospital Universitario Rio Hortega	Spain
	Sundeeep J. Punamiya	Tan Tock Seng Hospital	Singapore
	Paulo Sakai	University of San Paulo, Hospital Oswaldo Cruz	Brazil
	Dong Wan Se	Asan Medical Center	Korea
	NakJong Seong	Seoul National University Bundang Hospital	Korea
	Field Willingham	Emory University Hospital	USA
	Koichiro Yamakado	Mie University School of Medicine	Japan
	Fan Yong	Haine Hospital	China

### Steering Committee

---

Members	Andy Adam	Guy's and St. Thomas' Hospital	UK
	Todd H. Baron	The University of North Carolina at Chapel Hill	USA
	Sung-Gwon Kang	Yangji H Plus Hospital	Korea
	Jae-Kyu Kim	Cheonnam University Hospital	Korea
	Jin Hong Kim	Ajou Univerity Hospital	Korea
	Richard A. Kozarek	Virginia Mason MedicalCenter	USA
	DongKi Lee	Yonsei University Gangnam Severance Hospital	Korea
	Dong Wan Seo	Asan Medical Center	Korea
	Ho-Young Song	Asan Medical Center	Korea



## ABOUT SGI

### GOALS

The primary goals of the SGI are to:

### KEY FEATURES OF SGI

- ◆ Multidisciplinary
- ◆ Collaboration
- ◆ Unique Expertise
- ◆ World-Leading Vision

1

#### Maximize Interdisciplinary Collaboration

Establish a comprehensive GI intervention network between endoscopists, interventional radiologists, and GI surgeons for multidisciplinary collaboration and interaction

2

#### Share Technological Innovation

Inform, promote and globalize outstanding technological innovations of each specialty

3

#### Foster Future Specialists

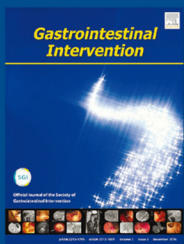
Aid young brilliant doctors to make an early debut on the international stage through SGI

4

#### Become a Role Model

Become a role model as a unique international meeting in the field of GI intervention

### About Gastrointestinal Intervention



As the official journal of the Society of Gastrointestinal Intervention, Gastrointestinal Intervention delivers original, peer-reviewed articles for the gastroenterologists, interventional radiologists, surgeons, gastrointestinal oncologists, nurses and technicians who need current and reliable information on the interventional treatment of gastrointestinal and hepatopancreaticobiliary diseases. Regular features also include 'the state of art' review articles by leading authorities throughout the world. Gastrointestinal Intervention will become an international forum for the description and discussion of the various aspects of interventional radiology, endoscopy and minimal invasive surgery. The Journal is published every 6 months since December 2012. Its abbreviated title is Gastrointest Interv.

	Room A	Room B
08		
09	<b>Special Session 1.</b> Gastrointestinal Interventions 08:00-10:20	<b>Session 1.</b> Advances in Management of Gastric Variceal Bleeding 08:00-09:10
10		<b>Session 2.</b> Advances in Management of Nonvariceal Bleeding 09:10-10:20
Opening Ceremony 10:20-10:40		
Coffee Break & Visit Poster Exhibition 10:40-11:10		
11		
12	Live Demonstration 1 11:10-12:20	<b>English Session</b> 11:10-12:20
13	Luncheon Symposium 1 12:20-13:20	Luncheon Symposium 2 12:20-13:20
14	<b>Special Session 2.</b> Treatment of Benign Biliary Stricture 13:20-14:50	<b>Session 3</b> Lower GI Stenting 13:20-14:50
15	<b>Session 4.</b> Present and Future in EUS Guided Intervention 14:50-15:50	<b>Session 5.</b> M & M Conference 14:50-15:50
16	Coffee Break & Visit Poster Exhibition 15:50-16:20	
17	Live Demonstration 2 16:20-17:05	<b>Session 6.</b> Metastatic CRC to the Liver: Conversion of Resectability 16:20-17:50
18	Live Demonstration 3 17:05-17:50	
Break		
SGI 2015 Dinner Symposium & Welcome Dinner 18:40-20:00		
20		

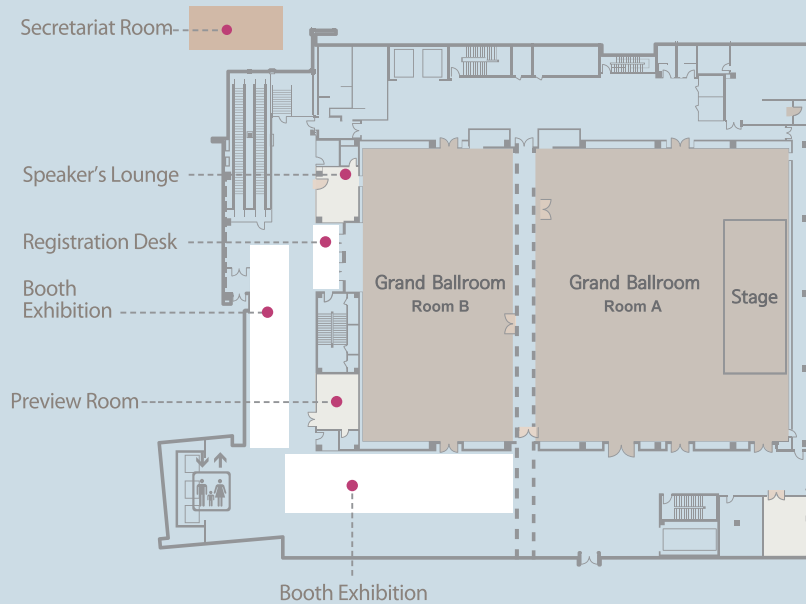
## October 3 (SAT)

	Room A	Room B	Room C
08			
09	Live Demonstration 4 08:00-09:30	<b>Session 7.</b> Local Management of Pancreatic Tumor 08:00-09:30	
Coffee Break & Visit Poster Exhibition 09:30-10:00			
10			
11	<b>Interactive Case Session</b> Successful Cases with Multidisciplinary Approach 10:00-11:20	Free Paper Presentation (Oral/Poster) 10:00-11:20	Free Paper Presentation (Oral/Poster) 10:00-11:40
12	<b>Debate Session:</b> Management of Necrotizing Pancreatitis 11:20-12:30	<b>Session 8.</b> Advances and Issues in Management of Obesity 11:20-12:30	
13	Luncheon Symposium 3 12:30-13:30	Luncheon Symposium 4 12:30-13:30	
14	<b>Session 9.</b> Palliative Management for Advanced Klatskin Tumor 13:30-15:00	<b>Session 10.</b> Optimal Treatment of HCC with Portal Vein Invasion 13:30-15:00	Radiological Technologists Session 13:30-16:40
15	Coffee Break & Visit Poster Exhibition 15:00-15:30		
16	Live Demonstration 5 15:30-16:40	<b>Session 11.</b> Strategies of Downstaging Intermediate Stage HCC 15:30-16:40	
Closing Ceremony			
17			

# Convention Center

# 2F

## Grand Ballroom



## Floor Plan

### Grand Ballroom A

- Opening Ceremony
- Scientific Sessions
- Live Demonstrations
- Luncheon Symposium
- Dinner Symposium & Welcome Dinner
- Closing Ceremony

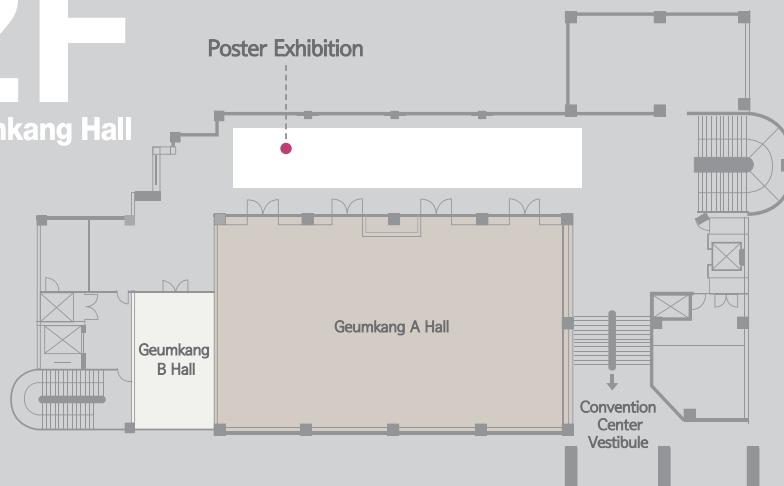
### Grand Ballroom B

- Scientific Sessions
- Free Paper Session
- Mentoring English Session

# Annex

# 2F

## Geumkang Hall



### Geumkang A

- Free Paper Session
- Radiological Technologists Session

# Meeting Information

## Preview Room

Preview Room (2F)

October 2 (Fri.) 07:00 – 18:00

October 3 (Sat.) 07:00 – 16:00

## Poster Exhibition Hall

Geumkang Lobby (Annex 2F)

October 2 (Fri.) 08:00 – 18:00

October 3 (Sat.) 08:00 – 17:00

## Booth Exhibition Hall

Grand Ballroom Lobby (2F)

October 2 (Fri.) 08:00 – 18:00

October 3 (Sat.) 08:00 – 17:00

## Registration

Grand Ballroom Lobby (2F)

October 2 (Fri.) 07:00 – 17:00

October 3 (Sat.) 07:00 – 16:00

## Name Badges

You are kindly requested to wear your name badge throughout the conference. Please note that admission to the scientific session rooms will be limited to registraterd participants wearing their badges.

## On-site Registration Fee

Category	On-Site Registration Fee	
	Domestic Delegate	International Delegate
Physician	KRW 300,000	USD 300
Fellow/Resident/Technician/Nurse	KRW 150,000	USD 150
Student	Complimentary	

## Entitlements

- Access to all scientific sessions and exhibition, lunch, coffee breaks, dinner symposium and welcome dinner
- Meeting kit including final program and abstract book



## Travel Grants

The SGI 2015 has a Travel Grant program to encourage participation from overseas. The recipients will be selected from those who submit abstracts. The winners will receive a **cash prize of USD 500 each.**

## Best Oral / Poster Awards Ceremony

The SGI 2015 Scientific program committee will select the best oral and best poster awards among the presented abstracts at SGI 2015. The winners of the Best Oral and Best Poster Awards will receive a **cash prize of USD 500 each.**

## SGI Edelweiss Scholarship

SGI Edelweiss Scholarship has been supporting young doctor from developing countries since 2013. The name of scholarship came from the lyrics "Small & White, Clean & Bright" of the song called "Edelweiss" which is the soundtrack of the "Sound of Music". This program has been designed to build a bright future of these young doctors by gathering pure and small gesture from the heart. We welcome you to support these young doctors by making donations. The scholarship is open to all young doctors from developing countries, and the recipients will be selected by the scholarship committee. Your support will ease the financial burden of those in need so that they may participate in quality meetings and promote a balanced growth of our field across different regions.

For International Donator      Bank Name: Hana Bank    Account No.: 576-910004-30032      Swift Code : HNBKRSSE  
For Domestic Donators      Bank Name: Hana Bank    Account No.: 576-910013-92905

# Social Program

## Opening Ceremony

Grand Ballroom A (2F)

October 2 (Fri.) 10:20 – 10:40

## Luncheon Symposium

Grand Ballroom A (2F)

Sponsored by Toshiba      October 2 (Fri.) 12:20 – 13:20

Grand Ballroom A (2F)

Sponsored by S&G Biotech      October 3 (Sat.) 12:30 – 13:30

Grand Ballroom B (2F)

Sponsored by Guerbet Korea      October 3 (Sat.) 12:30 – 13:30

## Dinner Symposium & Welcome Dinner

Grand Ballroom A (2F)

Sponsored by Olympus      October 2 (Fri.) 18:40 – 20:00

This program is open to all registered participants. It will be a great opportunity for the participants to enjoy a pleasant evening and excellent dinner and make new friends!

## Closing & Awards Ceremony

Grand Ballroom A (2F)

October 3 (Sat.) 16:40 – 17:00

- Best Oral & Poster Awards
- Travel Grant Awards
- Booth Tour Lucky Draw

## Invited Speakers, Moderators, Panelists

Ji Yong Ahn	Univ. of Ulsan	Korea
Yasuaki Arai	National Cancer Center Hospital	Japan
Jose Ramon Armengol-Miro	W.I.D.E.R Barcelona	Spain
Seungmin Bang	Yonsei Univ.	Korea
Todd H. Baron	University of North Carolina	USA
Soo Young Chae	Korea Univ.	Korea
Young Koog Cheon	Konkuk Univ.	Korea
Jae-Hee Cho	Gachon Univ.	Korea
Young Deok Cho	Soonchunhyang Univ.	Korea
Joon Il Choi	The Catholic Univ. of Korea	Korea
Moon Seok Choi	Sungkyunkwan Univ.	Korea
Ho Jong Chun	The Catholic Univ. of Korea	Korea
Hwanhoon Chung	Korea Univ.	Korea
Hyunsoo Chung	Yonsei Univ.	Korea
Jun Chul Chung	Soonchunhyang Univ.	Korea
Young-Hwa Chung	Univ. of Ulsan	Korea
Mariano E. Gimenez	Univ. of Buenos Aires	Argentina
Dong Il Gwon	Univ. of Ulsan	Korea
Kichang Han	Univ. of Ulsan	Korea
Sang Moon Han	CHA Univ.	Korea
Ziv J. Haskal	Univ. of Virginia	USA
Hyun Pyo Hong	Sungkyunkwan Univ.	Korea
Jin-Hyeok Hwang	Seoul National Univ.	Korea
Shin Hwang	Univ. of Ulsan	Korea
Jong Jin Hyun	Korea Univ.	Korea
Hiroyuki Isayama	The Univ. of Tokyo	Japan
Carlos Eduardo Jacob	Univ. of São Paulo School of Medicine	Brazil
Jae Young Jang	Soonchunhyang Univ.	Korea
Hwoon-Yong Jung	Univ. of Ulsan	Korea
Euichul Jung	Korea Univ.	Korea
Michel Kahaleh	Univ. of Virginia	USA
Chang Won Kim	Pusan National Univ.	USA
Dong-Sik Kim	Korea Univ.	Korea
Hyo-Cheol Kim	Seoul National Univ.	Korea
Jaihwon Kim	Seoul National Univ.	Korea
Jin Hong Kim	Ajou Univ.	Korea
Sang-Gyun Kim	Seoul National Univ.	Korea
Seung Kwon Kim	Washington Univ.	USA
Song Cheol Kim	Univ. of Ulsan	Korea
Tae Won Kim	Univ. of Ulsan	Korea
Yeul Hong Kim	Korea Univ.	Korea

## Invited Speakers, Moderators, Panelists

Yong Jin Kim	Soonchunhyang Univ.	Korea
Yoon Jun Kim	Seoul National Univ.	Korea
Yun Hwan Kim	Korea Univ.	Korea
Richard A. Kozarek	Virginia Mason Medical Center	USA
Se Hwan Kwon	Kyung Hee Univ.	Korea
Hans-Ulrich Laasch	The Christie NHS Foundation Trust	UK
James Y. Lau	The Chinese Univ. of Hong Kong	Hong Kong
DongKi Lee	Yonsei Univ.	Korea
Edward W. Lee	UCLA	USA
In Joon Lee	National Cancer Center	Korea
Jae Young Lee	Seoul National Univ.	Korea
Jong-Kyun Lee	Sungkyunkwan Univ.	Korea
Kwan Sik Lee	Yonsei Univ.	Korea
Kwang-Woong Lee	Seoul National Univ.	Korea
Sang Hyub Lee	Seoul National Univ.	Korea
Sang Kil Lee	Yonsei Univ.	Korea
Sang-Soo Lee	Univ. of Ulsan	Korea
Woo Jin Lee	National Cancer Center	Korea
Jorge E. Lopera	UT Health Science Center	USA
Jong Ho Moon	Soonchunhyang Univ.	Korea
Deok Ho Nam	G SAM Hospital	Korea
Heung-Kwon Oh	Seoul National Univ.	Korea
Sang Joon Park	Catholic Kwandong Univ.	Korea
Young Soo Park	Seoul National Univ.	Korea
Do Hyun Park	Univ. of Ulsan	Korea
Dong Il Park	Sungkyunkwan Univ.	Korea
Jookyung Park	Seoul National Univ.	Korea
D. Nageshwar Reddy	Asian Institute of Gastroenterology	India
Rungsun Rerknimitr	Chulalongkorn Univ.	Thailand
Ji Kon Ryu	Seoul National Univ.	Korea
Yozo Sato	Aichi Cancer Center Hospital	Japan
Dong Wan Seo	Univ. of Ulsan	Korea
Jinsil Seong	Yonsei Univ.	Korea
Hany Shehab	Cairo Univ.	Egypt
Chan Sup Shim	Konkuk Univ.	Korea
Ji Hoon Shin	Univ. of Ulsan	Korea
Ho-Young Song	Univ. of Ulsan	Korea
Toshihiro Tanaka	Nara Medical Univ.	Japan
Kiang Hiong Tay	Singapore General Hospital	Singapore
Christopher Thompson	Harvard Univ.	USA
Jiaywei Tsauo	Sichuan Univ.	China

## Invited Speakers, Moderators, Panelists

<b>Sang Myung Woo</b>	National Cancer Center	Korea
<b>Dong Hoon Yang</b>	Univ. of Ulsan	Korea
<b>Ichiro Yasuda</b>	Teikyo Univ.	Japan
<b>Hyun-Ki Yoon</b>	Univ. of Ulsan	Korea
<b>Yoo-Seok Yoon</b>	Seoul National Univ.	Korea

# Scientific Program

DAY 1. October 2 (FRI)		Room A
<b>08:00-10:20</b>	<b>Special Session 1.</b> Gastrointestinal Interventions <i>Moderator: Richard Kozarek (USA), Ho-Young Song (Korea)</i>	
08:00-08:15	Endoscopic Management of Gastric Neoplasms	Hwoon-Yong Jung (Korea)
08:15-08:30	Surgical Management of Gastric Neoplasms	Carlos E. Jacob (Brazil)
08:30-08:45	Development of Gastroduodenal Self-Expandable Metallic Stent: 25 Years of Trials and Errors	Ho-Young Song (Korea)
08:45-09:00	Management of Gastroduodenal Stent-related Complications	Richard Kozarek (USA)
09:00-09:15	The Role of Interventional Radiologists for Patients with Endoscopic Stent Placement Failure in Malignant Gastroduodenal Obstructions	Kichang Han (Korea)
09:15-09:30	Endoscopic Management of Postsurgical Leaks	Hany Shehab (Egypt)
09:30-09:45	Stent Placement for Recurrent Cancer in Surgically Altered Stomach	Jiaywei Tsauo (China)
09:45-10:00	Radiological Stent Placement for Small Bowel and Afferent Loop Obstruction	Hans-Ulrich Laasch (UK)
10:00-10:20	Discussion	
10:20-10:40	Opening	
10:40-11:10	Coffee Break	
<b>11:10-12:20</b>	<b>Live Demonstration 1.</b> (Hyderabad, India) Asian Institute of Gastroenterology <i>Moderator: D. Nageshwar Reddy (India), Michel Kahaleh (USA)</i>  <i>Panelists: Edward Lee (Korea), Jaihwon Kim (Korea), Dong Hoon Yang (Korea), Sangmyung Woo (Korea)</i>	
12:20-13:20	Luncheon Symposium by Toshiba Interventional Oncology involving GI Tract Malignancy	
<b>13:20-14:50</b>	<b>Special Session 2.</b> Treatment of Benign Biliary Stricture <i>Moderator: Hans-Ulrich Laasch (UK), DongKi Lee (Korea)</i>	
13:20-13:35	Characteristics of Benign Biliary Strictures	Michel Kahaleh (USA)
13:35-13:50	Articulated Percutaneous Plastic Biliary Stents	Jorge E. Lopera (USA)
13:50-14:05	New Stent Technologies for the Biliary Tract	Mariano E. Gimenez (Argentina)
14:05-14:20	Treatment of Benign Biliary Strictures: The Radiologist's Perspective	Hans-Ulrich Laasch (UK)
14:20-14:35	Treatment of Benign Biliary Stricture: Perspective from Surgeon	Jun Chul Chung (Korea)
14:35-14:50	High Level Benign Biliary Stricture	DongKi Lee (Korea)
<b>14:50-15:50</b>	<b>Session 4.</b> Present and Future in EUS Guided Intervention <i>Moderator: Todd H. Baron (USA), Dong Wan Seo (Korea)</i>	
14:50-15:05	EUS-guided Biliary Drainage	Do Hyun Park (Korea)
15:05-15:20	EUS-guided Management of Pancreatic Cystic Lesion	Ji Kon Ryu (Korea)
15:20-15:35	EUS-guided Fiducial Insertion for IGRT	Sang-Soo Lee (Korea)
15:35-15:50	Endoscopic Palliation of Pancreatic Cancer-related Pain	Ichiro Yasuda (Japan)
15:50-16:20	Coffee Break	
<b>16:20-17:05</b>	<b>Live Demonstration 2.</b> (Barcelona, Spain) WIDER Barcelona <i>Moderator: Jose Ramon Armengol-Miro (Spain), Young Deak Cho (Korea)</i>  <i>Panelist: Ji Hoon Shin (Korea), Seungmin Bang (Korea), Hyun Soo Chung (Korea), James Lau (Hong Kong)</i>	
<b>17:05-17:50</b>	<b>Live Demonstration 3.</b> (Bundang, Korea) Seoul National University Bundang Hospital <i>Moderator: Jorge E. Lopera (USA), Ji Kon Ryu (Korea)</i>  <i>Panelist: Kiang Hiong Tay (Singapore), Sang Hyub Lee (Korea), Jong-Kyun Lee (Korea)</i>	
18:40-20:00	Dinner Symposium by Olympus	

# Scientific Program

## DAY 1. October 2 (FRI)

## Room B

<b>08:00-09:10</b>	<b>Session 1.</b> Advances in Management of Gastric Variceal Bleeding <i>Moderator: Ziv Haskal (USA), Hwanhoon Chung (Korea)</i>	
08:00-08:17	Overview and Endoscopic Management of Gastric Variceal Bleeding: Update on Glue	<i>Jae Young Jang (Korea)</i>
08:17-08:35	Interventional Management of Gastric Varices: BRTO vs. PARTO	<i>Dong Il Gwon (Korea)</i>
08:35-08:52	Gastric Varices: Current Role of TIPS	<i>Ziv Haskal (USA)</i>
08:52-09:10	Percutaneous Transhepatic and Transsplenic Approach	<i>Hyo-Cheol Kim (Korea)</i>
<b>09:10-10:20</b>	<b>Session 2.</b> Advances in Management of Nonvariceal Bleeding <i>Moderator: Yasuaki Arai (Japan), Chan Sup Shim (Korea)</i>	
09:10-09:24	Endoscopic Treatment vs. Pharmacotherapy Alone	<i>James Lau (Hong Kong)</i>
09:24-09:38	Endovascular Treatment of Nonvariceal GI Bleeding	<i>Yasuaki Arai (Japan)</i>
09:38-09:52	Endovascular Treatment of Iatrogenic Bleeding	<i>In Joon Lee (Korea)</i>
09:52-10:06	ESD-related Bleeding (Immediate and Delayed): Endoscopic Management	<i>Sang Kil Lee (Korea)</i>
10:06-10:20	Interventional Management of Hemobilia	<i>Seung Kwon Kim (USA)</i>
10:40-11:10	Coffee Break	
<b>11:10-12:20</b>	<b>[English Session]</b> Value of Building up Mentorship in Academic Life <i>Moderator: Richard A. Kozarek (USA), Ho-Young Song (Korea)</i>	
11:10-11:25	How to Meet Mentors and Keep in Touch with Them	<i>Richard A. Kozarek (USA)</i>
11:25-11:40	Value of Building Up Mentorship in Academic Life	<i>Ho-Young Song (Korea)</i>
11:40-12:20	Discussion <i>Todd H. Baron (USA), Ziv Haskal (USA), DongKi Lee (Korea), Yasuaki Arai (Japan), Hans-Ulrich Laasch (UK), Hany Shehab (Egypt), Mariano E. Gimenez (Argentina), Jorge E. Lopera (USA)</i>	
12:20-13:20	Luncheon Symposium by Toshiba	
<b>13:20-14:50</b>	<b>Session 3.</b> Lower GI Stenting <i>Moderator: Richard Kozarek (USA), Hyun-Ki Yoon (Korea)</i>	
13:20-13:38	Preoperative Colonic Stenting	<i>Se Hwan Kwon (Korea)</i>
13:38-13:56	Safety and Efficacy of Palliative Self-expandable Metallic Stent Placement for Malignant Colorectal Obstruction in 287 Patients	<i>Hiroyuki Isayama (Japan)</i>
13:56-14:14	Ascending Colon Obstruction: Perspective from Endoscopist	<i>Young Soo Park (Korea)</i>
14:14-14:32	Ascending Colon Obstruction: Perspective from Radiologist	<i>Jorge E. Lopera (USA)</i>
14:32-14:50	Oncologic Outcomes of Colonic Stenting before Surgery	<i>Heung-Kwon Oh (Korea)</i>
<b>14:50-15:50</b>	<b>Session 5.</b> M & M Conference <i>Moderator: Yozo Sato (Japan), Dong Il Park (Korea)</i>	
14:50-15:05	RFA and TACE induced cholecystitis and diaphragm irritation treated by laparoscopic cholecystectomy and supra- and infra-diaphragmatic drainage catheter insertion	<i>Soo Young Chae (Korea)</i>
15:05-15:20	Percutaneous Retrieval of Malpositioned TIPS Stent Using a Alligator Forceps	<i>Seung Kwon Kim (USA)</i>
15:20-15:35	Intra-abdominal Free Air in the Lesser Sac	<i>Jong Jin Hyun (Korea)</i>
15:35-15:50	TBD	<i>Jookyung Park (Korea)</i>
15:50-16:20	Coffee Break	

# Scientific Program

DAY 1. October 2 (FRI)		Room B
16:20-17:50	<b>Session 6.</b> Metastatic CRC to the Liver: Conversion of Resectability <i>Moderator: Edward Lee (USA), Dong-Sik Kim (Korea)</i>	
16:20-16:35	Overview: Curative Intent	Yeul Hong Kim (Korea)
16:35-16:50	Perspectives in Resection after TARE or Neoadjuvant Chemotherapy	Dong-Sik Kim (Korea)
16:50-17:05	Neoadjuvant Chemotherapy	Tae Won Kim (Korea)
17:05-17:20	Interventional Approach (TACE or Radioembolization)	Edward W. Lee (USA)
17:20-17:35	Case Presentation	Euichul Jung (Korea)
17:35-17:50	Panel Discussion	
DAY 2. October 3 (SAT)		Room A
08:00-09:30	<b>Live Demonstration 4.</b> (Seattle, USA) Virginia Mason Medical Center <i>Moderator: Richard Kozarek (USA), Jin Hong Kim (Korea)</i>  <i>Panelists: Seung Kwon Kim (USA), Sang-Gyun Kim (Korea), Rungsun Rerknimitr (Thailand)</i>	
09:30-10:00	Coffee Break	
10:00-11:20	<b>Interactive Case Session</b> (Successful Cases with Multidisciplinary Approach) <i>Moderator: Ziv Haskal (USA), Jong-Kyun Lee (Korea)</i>	
10:00-10:16	Endoscopic Management of Gastrointestinal Leaks and Perforation with the Polyglycolic Acid (PGA) Sheet	Hyunsoo Chung (Korea)
10:16-10:32	Intraoperative Endoscopic Removal of a Duodenal Bezoar in a Patient with Intestinal Malrotation	Ji Yong Ahn (Korea)
10:32-10:48	MCA in Developed Chronic Obstructive Anastomotic Stricture after LDLT	Se Yong Sung (Korea)
10:48-11:04	IR Meets Endoscopist – rendezvous Outside the Bile Ducts	Kiang Hiong Tay (Singapore)
11:04-11:20	A Case of Successful Collaboration between Endoscopist and Interventional Radiologist for Management of Uncontrolled Duodenal Bleeding	Hwanhoon Chung (Korea)
11:20-12:30	<b>Debate Session:</b> Management of Necrotizing Pancreatitis <i>Moderator: Todd M. Baron (USA), Hans-Ulrich Laasch (UK)</i>	
11:20-11:40	How I Do It, Pancreatic Necrosectomy: Endoscopist's Point of View	Todd H. Baron (USA)
11:40-12:00	How I Do It, Pancreatic Necrosectomy: Surgeon's Point of View	Yoo-Seok Yoon (Korea)
12:00-12:20	Pancreatic Necrosectomy: Radiologist's Point of View	Ziv Haskal (USA)
12:20-12:30	Discussion	
12:30-13:30	Luncheon Symposium by S&G Biotech	
13:30-15:00	<b>Session 9.</b> Palliative Management for Advanced Klatskin Tumor <i>Moderator: Rungsun Rerknimitr (Thailand), Dong Il Gwon (Korea)</i>	
13:30-13:45	The Role of Endoscopic Drainage: Current Evidence	Rungsun Rerknimitr (Thailand)
13:45-14:00	Multiple Metallic Stents Placement for Malignant Hilar Biliary Obstruction: Perspective from Radiologist	Yozo Sato (Japan)
14:00-14:15	Palliative Management for Advanced Klatskin Tumor- Multiple Stenting-SEMS: Perspective from Endoscopist	Sang Hyub Lee (Korea)
14:15-14:30	Intraluminal Palliative Therapy for Klatskin's Tumor	Young Koog Cheon (Korea)
14:30-14:45	Endobiliary RFA	D. Nageshwar Reddy (India)

# Scientific Program

## DAY 2. October 3 (SAT)

## Room A

14:45-15:00	Palliative Management for Advanced Klatskin Tumor: Aggressive Surgical Approach	<i>Shin Hwang (Korea)</i>
15:00-15:30	Coffee Break	
<b>15:30-16:40</b>	<b>Live Demonstration 5.</b> (Hong Kong) The Chinese University of Hong Kong <i>Moderator: James Lau (Hong Kong), Jong Ho Moon (Korea)</i>  <i>Panelists: Deok Ho Nam (Korea), Jae-Hee Cho (Korea), Young Soo Park (Korea)</i>	

## DAY 2. October 3 (SAT)

## Room B

<b>08:00-09:30</b>	<b>Session 7.</b> Local Management of Pancreatic Tumor <i>Moderator: Woo Jin Lee (Korea), Song Cheol Kim (Korea)</i>	
08:00-08:18	EUS Guided Pancreatic Tumor Radiofrequency Ablation/Cryothermal Therapy - Fancy or Fantastic	<i>Dong Wan Seo (Korea)</i>
08:18-08:36	Minimal Invasive Pancreatectomy for Pancreatic Disease: Current Status, and Experience in Asan Medical Center	<i>Song Cheol Kim (Korea)</i>
08:36-08:54	High-intensity Focused Ultrasound for Pancreatic Tumor	<i>Jae Young Lee (Korea)</i>
08:54-09:12	Percutaneous Irreversible Electroporation of Pancreatic Adenocarcinoma	<i>Edward W. Lee (USA)</i>
09:12-09:30	Intra-arterial Therapy of Pancreatic Adenocarcinoma	<i>Toshihiro Tanaka (Japan)</i>
09:30-10:00	Coffee Break	
<b>10:00-11:20</b>	<b>Free Paper Session 1- GI</b> <i>Moderator: Deok Ho Nam (Korea), Sang-Gyun Kim (Korea)</i>	
	<b>Free Paper Session 2 - Hepato-Biliary System &amp; Pancreas</b> <i>Moderator: Jin-Hyeok Hwang (Korea), Hyun Pyo Hong (Korea)</i>	
<b>11:20-12:30</b>	<b>Session 8.</b> Advances and Issues in Management of Obesity <i>Moderator: Christopher Thompson (USA), Sang Moon Han (Korea)</i>	
11:20-11:40	General Overview of Bariatric Endoscopy	<i>Hyunsoo Chung (Korea)</i>
11:40-11:55	Bariatric Surgery Procedures and Outcomes	<i>Yong Jin Kim (Korea)</i>
11:55-12:10	Endoscopic Sleeve Gastroplasty with Apollo Procedure: World Results	<i>Christopher Thompson (USA)</i>
12:10-12:30	Bariatric Embolization: Left Gastric Artery Embolization to Treat Obesity - Clinical Studies	<i>Sang Joon Park (Korea)</i>
12:30-13:30	Luncheon Symposium by Guerbet Korea	
<b>13:30-15:00</b>	<b>Session 10.</b> Optimal Treatment of HCC with Portal Vein Invasion <i>Moderator: Edward W. Lee (USA), Kwan Sik Lee (Korea)</i>	
13:30-13:45	Overview of Portal Vein Invasion in HCC	<i>Yun Hwan Kim (Korea)</i>
13:45-14:00	Classification of Portal Vein Tumor Thrombosis	<i>Joon Il Choi (Korea)</i>
14:00-14:15	Treatment Modality of HCC with PV Invasion	<i>Yoon Jun Kim (Korea)</i>
14:15-14:30	Role of External Beam Radiotherapy for HCC with Portal Vein Invasion	<i>Jinsil Seong (Korea)</i>
14:30-14:45	Yttrium-90 in HCC with PV Invasion	<i>Edward W. Lee (USA)</i>
14:45-15:00	Optimal Treatment of HCC with Portal Vein Invasion: Multimodal approach	<i>Moon Seok Choi (Korea)</i>
15:00-15:30	Coffee Break	



## Scientific Program

DAY 2. October 3 (SAT)		Room B
<b>15:30-16:40</b>	<b>Session 11.</b> Strategies of Downstaging Intermediate Stage HCC <i>Moderator: Kiang Hiong Tay (Singapore), Young-Hwa Chung (Korea)</i>	
15:30-15:45	Surgical Role in Multinodular HCC	<i>Kwang-Woong Lee (Korea)</i>
15:45-16:00	Conventional TACE: Case and Literature Review	<i>Chang Won Kim (Korea)</i>
16:00-16:15	Drug-Eluting Bead TACE: Case and Literature Review	<i>Ho Jong Chun (Korea)</i>
16:15-16:40	Y-90 Radioembolization: Case and Literature Review	<i>Kiang Hiong Tay (Singapore)</i>

## Poster Presentation

- PP-01** GASTRODUODENAL STENT PLACEMENT VERSUS SURGICAL GASTROJEJUNOSTOMY FOR THE PALLIATION OF GASTRIC OUTLET OBSTRUCTIONS IN PATIENTS WITH UNRESECTABLE GASTRIC CANCER: A PROPENSITY SCORE-MATCHED ANALYSIS  
*Jung-Hoon Park (Korea)*
- PP-02** TEN YEAR EXPERIENCE OF ENDOSCOPIC SUBMUCOSAL DISSECTION OF SUPERFICIAL ESOPHAGEAL NEOPLASMS IN A SINGLE CENTER  
*Do Hoon Kim (Korea)*
- PP-03** PRIMARY AND CONVERSION PERCUTANEOUS RADIOLOGIC GASTROJEJUNOSTOMY: 10 YEAR EXPERIENCE IN A SINGLE CENTER  
*Yook Kim (Korea)*
- PP-04** ENDOSCOPIC MUCOSAL RESECTION FOR NEUROENDOCRINE TUMORS OF GASTROINTESTINAL TRACT  
Kamran Lankarani  
*Kamran Lankarani (Iran)*
- PP-05** COVERED METALLIC STENTS WITH AN ANTI-MIGRATION DESIGN VERSUS UNCOVERED STENTS FOR THE PALLIATION OF MALIGNANT GASTRIC OUTLET OBSTRUCTION: A MULTICENTER, RANDOMIZED TRIAL  
*Sang Hyub Lee (Korea)*
- PP-06** CLINICAL EFFICACY OF POLYGLYCOLIC ACID SHEET TO PREVENT ESOPHAGEAL STRICTURE AFTER ENDOSCOPIC SUBMUCOSAL DISSECTION  
*Hyuk Lee (Korea)*
- PP-07** A RARE CASE OF SELF-EXPANDABLE METALLIC STENT OBSTRUCTION BY RAPID TUMOR INGROWTH  
*Jung Seok Kim (Korea)*
- PP-08** SELF-EXPANDING METAL STENTS FOR MALIGNANT ESOPHAGEAL AND ESOPHAGOGASTRIC OBSTRUCTION: EXPERIENCE WITH A FULL COVERED NITINOL STENT  
*Amarbat Baatarum (Mongolia)*
- PP-09** CANINE DOSIMETRY MODEL FOR PANCREATIC DOSE CONSTRAINT IN STOMACH CANCER RADIOTHERAPY  
*Sei Hwan You (Korea)*
- PP-10** PERCUTANEOUS CRYOABLATION IN PATIENTS WITH LUNG METASTASES FROM COLORECTAL CANCER USING CONE-BEAM CT GUIDANCE: FEASIBILITY AND SAFETY  
*Hyunpyo Hong (Korea)*
- PP-11** CAP-ASSISTED ENDOSCOPIC MUCOSAL RESECTION FOR RECTAL NEUROENDOCRINE TUMORS: COMPARISONS WITH CONVENTIONAL ENDOSCOPIC MUCOSAL RESECTION AND ENDOSCOPIC SUBMUCOSAL DISSECTION  
*Jeong-Mi Lee (Korea)*
- PP-12** THE EFFICACY OF THE NOVEL TISSUE GRASPER-CLIPS TECHNIQUE FOR ENDOSCOPIC CLOSURE OF LARGE SIGMOID COLON PERFORATIONS IN EXPERIMENTAL SIMULATION MODEL  
*Jun Young Eun (Korea)*
- PP-13** COMBINATION OF NBI, CHROMOENDOSCOPY AND ENDOSCOPIC ULTRASONOGRAPHY TO PREDICT DEEP SUBMUCOSAL INVASION IN SCHEDULED ESD PATIENTS  
*YuSik Myung (Korea)*

- PP-14** EW-7197, A NOVEL TGF-B INHIBITOR: SUPPRESSION OF GRANULATION TISSUE FORMATION AFTER BARE METALLIC STENT PLACEMENT IN A RAT ESOPHAGEAL MODEL  
*Eun Jung Jun (Korea)*
- PP-15** TRANSJUGULAR HEPATIC INTERNAL ASCITES SHUNT (THIAS) : A NEWLY APPROACH FOR ASCITES DRAINING IN EXPERIMENTAL SWINE  
*Yong Fan (China(P.R.C))*
- PP-16** LYMPHANGIOGRAPHY FOR REFRACTORY POSTOPERATIVE CHYLE LEAKAGE  
*Takaaki Hasegawa (Japan)*
- PP-17** PARTIALLY COVERED, SELF-EXPANDABLE METAL STENTS WITH ANTI-REFLUX VALVES FOR MALIGNANCIES COMPRISING HILAR REGION  
*Sung Kwon Kang (Czech Republic)*
- PP-18** THE CLINICAL USEFULNESS OF VIDEO-FLUOROSCOPY IN THE OBSTRUCTIVE SLEEP APNEA SYNDROME  
*Ki-Jeong Kim (Korea)*
- PP-19** POSTERIOR-ANTERIOR RADIOGRAPH OF LOWER EXTREMITY TO REDUCE RADIATION EXPOSURE TO GONAD  
*Ji-Na Shim (Korea)*
- PP-20** HEPATOCELLULAR CARCINOMA WITH PORTAL VEIN TUMOR THROMBUS: TREATMENT WITH TRANSARTERIAL CHEMOEMBOLIZATION COMBINED WITH CT GUIDED 125IODINE IMPLANTATION IN PORTAL VEIN TUMOR THROMBUS—A RETROSPECTIVE CONTROLLED STUDY  
*Hong Tao Hu (China(P.R.C))*
- PP-21** RADIOFREQUENCY ABLATION COMBINED WITH TACE IN TREATMENT OF HEPATOCELLULAR CARCINOMA LOCATED IN THE SECOND HEPATIC PORTAL  
*Hong Tao Hu (China(P.R.C))*
- PP-22** BILIARY INTRADUCTAL METASTASIS FROM ADVANCED GASTRIC CANCER: RADIOLOGIC AND HISTOLOGIC CHARACTERISTICS, AND THE CLINICAL OUTCOMES OF PERCUTANEOUS, METALLIC STENT PLACEMENT  
*Joo Yeon Lee (Korea)*
- PP-23** A CASE OF CHOLECYSTODUODENOSTOMY COMPLICATED WITH GB NECROSIS RESULTING IN DUODENAL FISTULA  
*Jae Woo Lee (Korea)*
- PP-24** ASSOCIATION BETWEEN REGULATED UPON ACTIVATION NORMAL T CELLS EXPRESSED AND SECRETED (RANTES) -403A/G POLYMORPHISM AND SUSCEPTIBILITY TO HEPATITIS B VIRUS INFECTION: A META-ANALYSIS  
*Zheng Zeng (China(P.R.C))*
- PP-25** ENDOSCOPIC ULTRASOUND GUIDED FINE NEEDLE ASPIRATION BIOPSY FOR THE EVALUATION OF LIVER MASSES  
*Dongwook Oh (Korea)*
- PP-26** ENDOSCOPIC HEMOSTASIS USING COVERED METALLIC STENT FOR POSTENDOSCOPIC SPHINCTEROTOMY BLEEDING OR PREVENT THIS IN HIGH RISK PATIENTS  
*MIQUEL MASACHS-PERACAULA (Spain)*
- PP-27** USEFULNESS OF RADIOEMBOLIZATION IN IDENTIFYING PATIENTS WITH FAVORABLE TUMOR BIOLOGY OF HEPATOCELLULAR CARCINOMA BEFORE LIVING DONOR TRANSPLANTATION  
*Sungtae Hwang (Korea)*

## Poster Presentation

- PP-28** ENDOSCOPIC ULTRASOUND-GUIDED CHOLEDOCHODUODENOSTOMY. EXPERIENCE AT AN ONCOLOGY HOSPITAL  
*María Fernanda Torres Ruiz (Mexico)*
- PP-29** COMPREHENSIVE REVIEW OF HEPATIC ARTERY INJURY OR DISSECTION ASSOCIATED WITH TACE  
*Ji Hoon Shin (Korea)*
- PP-30** COMPLICATIONS AND MANAGEMENT OF LONG-TERM RETAINED PLASTIC BILIARY STENT  
*Se Hoon Sohn (Korea)*
- PP-31** PERCUTANEOUS TRANSHEPATIC STONE REMOVAL AFTER GASTRECTOMY  
*Hyunpyo Hong (Korea)*
- PP-32** COMPARISON OF OUTCOMES BETWEEN 7-FR AND 10-FR PLASTIC STENTS FOR PATIENTS WITH BILE DUCT CANCER  
*Yong Seok Kang (Korea)*
- PP-33** TRANSJUGULAR INTRAHEPATIC PORTOSYSTEMIC SHUNT (TIPS) VERSUS BALLOON-OCCCLUDED RETROGRADE TRANSVENOUS OBLITERATION (BRTO) FOR THE MANAGEMENT OF GASTRIC VARICES: TREATMENT ALGORITHM ACCORDING TO IMAGING FINDINGS AND CLINICAL MANIFESTATIONS  
*Seung Kwon Kim (United States)*
- PP-34** PERCUTANEOUS SIDE-BY-SIDE STENTS PLACEMENT FOR MALIGNANT HILAR BILIARY STRICTURES  
*Shinichi Morita (Japan)*
- PP-35** PERCUTANEOUS TRANSHEPATIC EMBOLIZATION OF A BRONCHOBILIARY FISTULA DEVELOPING SECONDARY TO A BILOMA AFTER CONVENTIONAL TRANSARTERIAL CHEMOEMBOLIZATION IN A PATIENT WITH HEPATOCELLULAR CARCINOMA.  
*Se Hwan Kwon (Korea)*
- PP-36** PARADIGM SHIFT FOR THE TREATMENT OF REFRACTORY BENIGN BILIARY STRICTURE (BBS) WITH MAGNET COMPRESSION ANASTOMOSIS (MCA): MID-TERM FOLLOW-UP AFTER RECANALIZATION OF THE COMPLETELY OBSTRUCTED STRICTURES  
*Sung Ill Jang (Korea)*
- PP-37** DOUBLE STENT PLACEMENT FOR BILIARY AND DUODENAL OBSTRUCTION CAUSED BY UNRESECTABLE PANCREATOBILIARY CANCER  
*Atsushi Kubo (Japan)*
- PP-38** TRANSJUGULAR INTRAHEPATIC PORTOSYSTEMIC SHUNT (TIPS) USING TRANSSPLENIC ACCESS WITH BALLOON-ASSISTED PUNCTURE TECHNIQUE IN A PATIENT WITH CHRONIC AND COMPLETE OCCLUSION OF PORTAL VEIN - A CASE REPORT  
*So Yeong Jeong (USA)*
- PP-39** COMPARISON OF THE DIAGNOSTIC ACCURACY BETWEEN BASE AND COVER SLIDE SMEAR AFTER ENDOSCOPIC ULTRASOUND GUIDED FINE NEEDLE ASPIRATION (EUS-FNA) FOR PANCREATIC CANCER : THE INTERIM ANALYSIS OF SINGLE BLIND PROSPECTIVE STUDY  
*Jong-chan Lee (Korea)*
- PP-40** SAFETY AND EFFICACY OF EUS-GUIDED ETHANOL ABLATION FOR TREATING SMALL SOLID PANCREATIC NEOPLASM  
*Woo Hyun Paik (Korea)*

- PP-41** COMPARISON OF CYTOLOGICAL AND HISTOLOGICAL EXAMINATIONS IN THE DIAGNOSIS OF PANCREATIC MALIGNANCIES USING ENDOSCOPIC ULTRASOUND-GUIDED FINE NEEDLE ASPIRATION  
*Dong Kee Jang (Korea)*
- PP-42** OUTCOME OF ENDOSCOPIC ULTRASOUND-GUIDED ETHANOL LAVAGE FOR INTRADUCTAL PAPILLARY MUCINOUS NEOPLASM (IPMN) OF THE PANCREAS  
*Jun Hyuk Son (Korea)*
- PP-43** CONVERGENCE PERFORMANCE EVALUATION OF RADIATION PROTECTION FOR APRON USING THE PSNR  
*Dae-Ho Km (Korea)*
- PP-44** SELFEXPANDABLE STENTS: EXPERIENCE IN THE TREATMENT OF DIFFICULT UPPER GASTROINTESTINAL STRICTURES  
*Mart Eisen (Estonia)*
- PP-45** PERORAL PANCREATOSCOPY WITH ELECTROHYDRAULIC LITHOTRIPSY FOR PANCREATIC DUCT STONE AFTER PLACEMENT OF FULLY COVERED SELF-EXPANDABLE METAL STENT  
*Seung Kak Shin (Korea)*
- PP-46** A CASE OF BILIARY STRICTURE MANAGED WITH COLLABORATIVE ENDOSCOPIC AND RADIOLOGICAL INTERVENTIONS  
*Jingu Kang (Korea)*
- PP-47** BRONCHODUODENAL FISTULA CONTROLLED BY A VASCULAR EMBOLIC DEVICE  
*Hwanhoon Chung (Korea)*
- PP-48** MCA IN DEVELOPED CHRONIC OBSTRUCTIVE ANASTOMOTIC STRICTURE AFTER LDLT  
*Se Yong Sung (Korea)*
- PP-49** ENDOSCOPIC FULL COVERED METALLIC STENT INSERTION FOR SUGGESTED CBD RUPTURE USING RENDEZVOUS TECHNIQUE WITH PTBD  
*Euichul Jung (Korea)*
- PP-50** RFA AND TACE INDUCED CHOLECYSTITIS AND DIAPHRAGM IRRITATION TREATED BY LAPAROSCOPIC CHOLECYSTITIS AND SUPRA- AND INFRA-DIAPHRAGMATIC DRAINAGE CATHETER INSERTION  
*Euichul Jung (Korea)*
- PP-51** MANAGEMENT OF JEJUNAL BLEEDING BY JEJUNAL VARICEAL EMBOLIZATION AND PORTAL VENOUS RECANALIZATION AFTER PYLORUS-PRESERVING PANCREATODUODENECTOMY  
*Ji Hoon Shin (Korea)*
- PP-52** ENDOSCOPIC MANAGEMENT OF GASTROINTESTINAL LEAKS AND PERFORATION WITH THE POLYGLYCOLIC ACID (PGA) SHEET  
*Hyunsoo Chung (Korea)*
- PP-53** A CASE OF ENDOSCOPIC ULTRASOUND- AND PERCUTANEOUS FLUOROSCOPY-GUIDED DRAINAGE FOR THE MULTILOCULATED PELVIC ABSCESES  
*Hwan Sung Park (Korea)*
- PP-54** EUS-PROVOCATION TEST FOR THE DIAGNOSIS OF OBSCURE ABDOMINAL PAIN  
*Min Keun Cho (Korea)*

# Useful Information

## Transportation

### Venue → Incheon International Airport

#### Limousine Bus



Operation Hours	Time Interval	Fare	Traveling	Time Information
04:05 ~ 21:00	15-25 min	KRW 15,000	70-80 min	02-571-8100

※Directions to Incheon International Airport via Airport bus Take the Hotel Shuttle bus to Yangjae subway station line number 3. From the exit gate number 3 go straight about 300m in the direction towards BangBang Intersection. At this intersection you can find a bus stop designated for Airport buses. The bus number is 6009. Estimated time to the airport is 70-80mins

#### Taxi



Luxury Taxis	Regular Taxis
Approximately KRW 110,000	Approximately KRW 80,000

※Including toll fees.

### Venue → Gimpo International Airport

#### Subway



Operation Hours	Time Interval	Fare	Traveling	Time Information
05:20 ~ 18:00	15 min	KRW 1,450	60~70 min	02-2667-0386

※Directions to Gimpo International Airport Take the Hotel Shuttle bus to Yangjae subway station line number 3. Take the subway in the direction heading towards Nambu Bus Terminal(station). Get out of the subway at Express Bus Terminal(station) which is 4 stops away from Yangjae station. Transfer at Express Bus Terminal Station to line number 9 then take the train heading in the direction towards sinbanpo, stay on this train till you reach Gimpo International Airport. Estimated time to airport is 60-70mins

#### Taxi (Venue → Gimpo International Airport)



Luxury Taxis	Regular Taxis
Approximately KRW 40,000	Approximately KRW 30,000

※Including toll fees.



#### Emergency

Dial 119 for the fire department and medical assistance, and 112 for the police.



#### Climate

The climate in Seoul in October ranges approximately between 5-22°C degrees. Warm clothing such as long pants or long-sleeved dresses are recommended, and we also recommend you to bring an outdoor jacket for the late night and early morning.



#### Currency

The unit of the Korean currency is the Won (₩). Coin denominations are ₩10, ₩50, ₩100, and ₩500. Banknotes are ₩1,000, ₩5,000, ₩10,000, and ₩50,000. The exchange rate is approximately USD1 to KRW 1,029 as of October 2014.



#### Tipping

Tipping is not customary in Korea. Sometimes, expensive restaurants and luxury hotels may add a service charge of 10%. Thus, you do not necessarily have to prepare for extra charges since they will be included in the bill.



#### Electricity

In Korea, 220 volt outlets are most common. Some hotels provide 110 volt outlets for shavers. Please check the power supply before use.



#### Telephone Calls

For international calls, first dial the international dialing code (001, 002, or 00700), then the country code, followed by the area code, and then the phone number.



#### Business Hours

Public offices are generally open from 09:30 to 17:00 on weekdays but are closed on Saturdays and Sundays. Most of the shops are open from 10:00 to 22:00 through the entire week.

# Industrial Exhibition

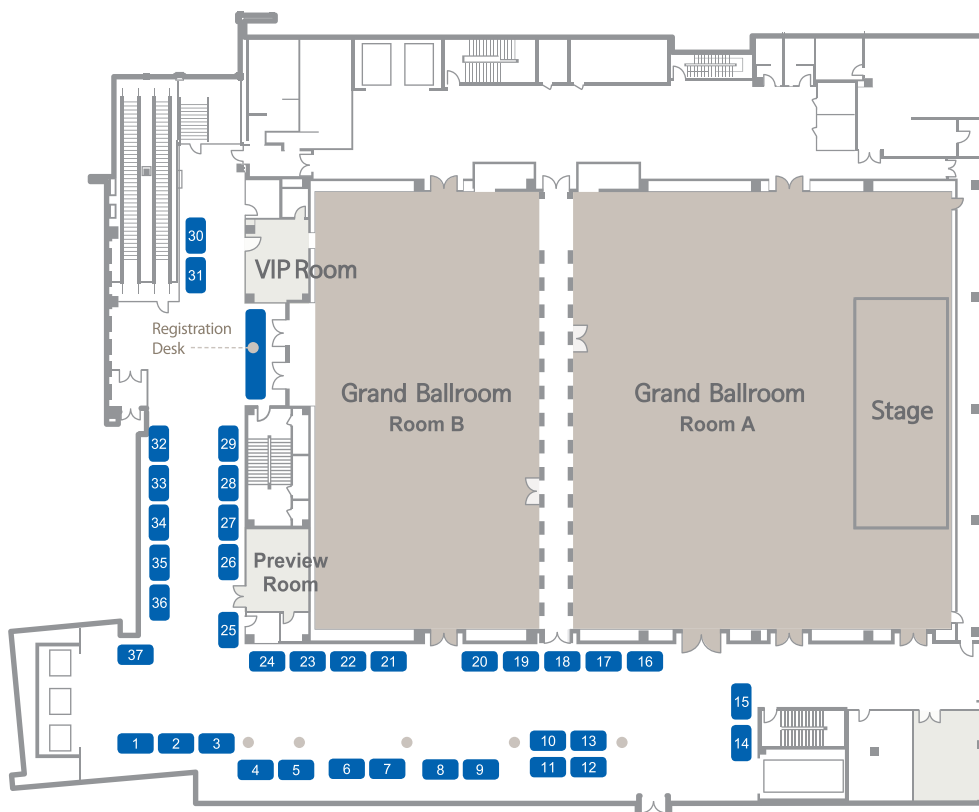
Exhibition Date and Time

October 2 (Fri.) 08:00 – 18:00

October 3 (Sat.) 08:00 – 17:00

## Booth Layout

### Grand Ballroom Lobby



- 1 GE Healthcare
- 2,3 TOSHIBA
- 4,5 Pharmbio Korea Inc.
- 6,7 Dong-Kook Pharmaceutical
- 8,9 TaeWoong Medical Co., Ltd.
- 10-13 S&G Biotech
- 14,15 Myungmoon Pharm Co., Ltd.
- 16,17 Guerbet Korea
- 18,19 Olympus Korea Co., Ltd.
- 20 Yuhan Corporation Co., Ltd.
- 21,22 DAEWOONG
- 23,24 BRACCO IMAGING KOREA
- 25 LGLS Co., Ltd.
- 26 SAMJIN PHARM.CO., LTD.
- 27 MERIT MEDICAL
- 28 Boston Scientific
- 29 RF MEDICAL CO., LTD.
- 30 Standard Sci-Tech
- 31 SK chemicals
- 32 Kachu Medico Co.,Ltd.
- 33 Cook Medical Korea Ltd.
- 34 Roche Korea Co., Ltd.
- 35 JW Pharmaceutical
- 36 SEMYOUNG
- 37 Jeil Pharmaceutical Co., Ltd.

# Sponsor & Exhibition Directory

## Booth No. 1

### GE Healthcare

GE Healthcare



**Address** 7F POBA Gangnam Tower 343, Hakdong-ro, Gangnam-gu, Seoul, 135-820, Korea  
**Tel** +82-2-6201-3700  
**Fax** +82-2-6201-3802  
**Homepage** www.gehealthcare.co.kr  
**E-mail**

#### Company or Product Introduction

GE Healthcare provides transformational medical technologies and services that are shaping a new age of patient care. Our expertise in medical diagnostics is helping clinicians around the world re-imagine new ways to predict, diagnose, and inform so patients can live their lives to the fullest

#### Main Products

- Omnipaque™ - The world's leading contrast agent for X-ray and has been used in over 360 million patients worldwide.
- Visipaque™ - The osmolar contrast medium with the growing body of statistically significant evidence.
- Omniscan™ - Nonionic Omniscan supports current protocols, providing enhanced diagnostic confidence.

## Booth No. 4,5

### Pharmbio Korea Inc.



**Address** 7F, Samho a-bldg, 275-1, Yangjae 2-dong, Seocho-gu, Seoul, Korea  
**Tel** +82-2-587-2551  
**Fax** +82-2-523-9784  
**Homepage** www.pharmbio.co.kr  
**E-mail** mkt@pharmbio.co.kr

#### Company or Product Introduction

Pharmbio Korea Inc. is a young and innovative company established in 1999, specializing in registration, importing and marketing ethical pharmaceutical products in Korea. It has been recognized and awarded for its highest growth rate, powerful marketing strategy and contribution to public health.

Now it is one of the most influential company particularly in gastroenterology (internal medicine, general surgery), urology, oncology in Korea.

## Booth No. 2,3

### TOSHIBA

**TOSHIBA**

Leading Innovation >>>

**Address** (07325) 7F KTB B/D, 66 Yeouidae-ro, Yeongdeungpo-gu, Seoul, Korea  
**Tel** +82-2-860-8028  
**Fax** +82-2-855-8052  
**Homepage** www.toshiba-medical.co.kr  
**E-mail** soyoun.park@toshiba-medical.co.kr

#### Company or Product Introduction

Toshiba Medical Systems Corporation is a leading worldwide provider of medical diagnostic imaging systems and comprehensive medical solutions, such as CT, X-ray and vascular, ultrasound, nuclear medicine and MRI systems, as well as information systems for medical institutions. Toshiba Medical Systems Corporation has been providing medical products for about 100 years. Toshiba Medical Systems Corporation is a wholly owned subsidiary of Toshiba. Toshiba Medical Systems Corporation has responded to customers' need by providing a wide range of high-value solutions in over 135 countries around the globe.

With headquarters in Yeouido, Seoul, Toshiba Medical Systems Korea (TMSK) markets, sells, distributes and services radiology and cardiovascular systems, including CT, MR, ultrasound and X-ray, and coordinates clinical diagnostic imaging research for all modalities in Korea. As a subsidiary of Toshiba Medical Systems Corporation, our mission is to be a global leader in medical imaging industry.

## Booth No. 6,7

### Dong-Kook Pharmaceutical



**Address** 7, Teheran-ro 108-gil, Gangnam-gu, Seoul, Korea  
**Tel** +82-2-2191-9978  
**Fax** +82-2-3453-7542  
**Homepage** www.dkpharm.co.kr  
**E-mail** moonandus@gmail.com

#### Company or Product Introduction

The most used Iopamidol contrast media in Korea  
Optimum safety of products line-up for contrast-induced nephropathy and N.S.F  
Exporting contrast media to EU and Japan about 15 million US dollar in 2014  
Our company motto is creation, harmony and trust. Creation means the origination of higher value added by development of the individual's abilities. Harmony means the harmonious teamwork of these abilities. Based on the principal above, The things gain from the fulfillment of customer expectation is the trust. In addition, our final goal - respect for life and healthy life of the nation - settled the policy of the company, Human & life



**Booth No. 8,9**

**TaeWoong Medical Co.,Ltd.**



**Address** Bldg.C, 4F, DaebangTriplaon BusinessTower, 158 Haneulmaeul-ro, ilsandong-gu, Goyang-si, Gyeonggi-do, Korea 410-315  
**Tel** +82-31-904-6196  
**Fax** +82-31-904-6157  
**Homepage** www.stent.net  
**E-mail** sales@stent.net

**Company or Product Introduction**

TaeWoongMedical Co.,Ltd, was established as a private enterprise in 1991 by the current CEO Shin Kyoung Min with ambition to open a new era in the field of less invasive interventional therapy.

In 2001, we've obtained CE marking on gastrointestinal stents and started to expand our market from domestic to global. Moreover, upon acquiring sanitary registrations in China, Japan, USA, Canada, etc.

TaeWoong has become a leading medical device provider exporting to more than 40 countries

**Booth No. 10-13**

**S&G Biotech Co., Ltd**



**Address** 903, WoolimLionsValley, 27, dunchon-daero 457beon-gil, jungwon-gu, seongnam-si, Gyeonggi-do, Korea  
**Tel** +82-31-748-6625  
**Fax** +82-31-748-6620  
**Homepage** www.sngbio.com  
**E-mail** sina@sngbio.com

**Company or Product Introduction**

S&G Biotech is a medical devices venture company which was founded by the principles of contributing to the promotion of health and life extension through the advanced researches since year 2000. We promote and support researchers to concentrate on providing customer or patients with innovative medical devices. We have established our own R&D facility which is majoring in research and development of the "stent", and we aim for securing the original technology regarding both vascular & non-vascular stents. We manufacture our own self-expandable nitinol metallic stents and diverse endoscopic & angiographic accessories for various organs and blood vessels. We, S&G Biotech, have been exporting our products to more than 30 countries all around the world including, Europe, Middle East, Asia and America, and are currently expanding international partners expeditiously.

**Booth No. 14, 15**

**Myungmoon Pharm Co., Ltd.**



**Address** Gangnam-daero54-gil7, Gangnam-gu, Seoul, Korea  
**Tel** +82-2-6711-2074  
**Fax** +82-2-572-6513  
**Homepage** www.mmpharm.co.kr  
**E-mail** mkt14@mmpharm.co.kr

**Company or Product Introduction**

Our company has pursued the development and introduction of the better and more advanced products under the catchphrase of "Pursuit of Advance."

During the past 10 years, it has enjoyed an annual mean growth rate in both units and value of over 20%.

Over fifty ethical products, which are the fruits of efforts accumulated in our developmental activities as well as development through technical cooperation with foreign pharmaceutical companies, are widely recognized for their contribution to medical treatment.

With the experience and expertise accumulated in the production of pharmaceuticals over many years, our company produces and supplies a line of top quality products, including Scopolamine patch (Kimite).

Myungmoon keeps providing good products and information to meet needs, and moves forwards the development of new products, new technology and technological innovation which can be made great contributions to the public healthcare.

Our products have continuously grown in the popularity and have gained an outstanding reputation in the Korean pharmaceutical industry.

**Booth No. 16, 17**

**Guerbet Korea**



**Address** 6th IS Bldg 719-35 Yeoksam-dong, Gangnam-gu, Seoul, Korea  
**Tel** +82-2-3453-1212  
**Fax** +82-2-3453-2634  
**Homepage** www.guerbet.co.kr / www.guerbet.com  
**E-mail** jung-hun.kim@guerbet-group.com

**Company or Product Introduction**

Guerbet Group, specialized in contrast agents for medical imaging has since 2006 invested €195 million in its R&D programmes and 145 million in its three French production sites. Today more than 70% of Guerbet's production is exported to more than 70 countries. Guerbet is an innovator, developer and manufacturer of contrast agents and injection systems. Contrast agents are essential for diagnosis, therapeutic decisions (surgical, medical or other) as well as for individualized monitoring of the efficacy of the proposed treatment.

Guerbet's men and women are committed to offering health professionals contrast agents, medical devices and innovative solutions indispensable to diagnostic and interventional imaging to improve patients' prognosis and quality of life.

# Sponsor & Exhibition Directory

**Booth No. 18, 19** Olympus Korea Co., Ltd.

**OLYMPUS**

**Address** Olympus Tower A, 446, Boneunsa-ro, Gangnam-gu, Seoul, 135-509, Korea  
**Tel** +82-2-6255-3465  
**Fax** +82-2-6255-3435  
**Homepage** www.olympusmedical.co.kr  
**E-mail**

**Company or Product Introduction**

Olympus Korea was founded by Olympus Corporation which is the world leading optical device and system in the product field of digital imaging devices such as digital still camera and medical device, system such as endoscope, Endo-therapy accessories and various surgical products. Moreover, Life science business is also run by Olympus Korea. Olympus Korea's medical division was founded in July, 2004 and has acquired over 70% of market share taking the no.1 in the endoscope market. Driven by its core-competence of optical technology and continuous marketing drive, Olympus Korea will not stop being as one of the overseas branch offices. It will keep investing in the technology and solutions R&D to be a more competitive company.

**Booth No. 20** Yuhan Corporation Co., Ltd.



**Address** 74, NORANGJIN-RO, DONGJAK-GU, SEOUL, KOREA  
**Tel** +82-2-828-0181  
**Fax** +82-2-828-0050  
**Homepage** www.yuhan.co.kr  
**E-mail**

**Company or Product Introduction**

Provide the best Products for the people  
After returning from the USA in 1925, Dr. Ilhan New witnessed the hardship in his country under Japanese imperialism. He founded the Yuhan corporation in 1926 with the belief that only healthy people could reclaim their sovereignty and he sought to solve widespread public health problems. Over 80 years, the founding creed to make the best medicines and contribute to public health has been succeeded by us through our intense research and development activities and successful collaboration with multinational pharmaceutical companies. As a result, Yuhan is one of the most respected companies in Korea for 20 consecutive years, according to the annual Korean Management Association Consulting (KMAC) survey. Yuhan has been playing active role in global citizenship since its foundation in 1926. Even before global citizenship was conceptualized, Dr. New believed that was the duty and responsibility of business to develop itself for the prosperity of all society, and his own personal commitment to this was the donation of all of his personal property throughout his life up until his death. Yuhan is continuously making its social contribution by establishing a system where part of the company's profits is returned to society. This endeavor has been domestically and internationally recognized through various organizations and publications

**Booth No. 21, 22** DAEWOONG



**Address** (135-715) Bongeunsa-ro114-gil 12, Gangnam-gu, Seoul, Korea  
**Tel** +82-2-550-8368  
**Fax** +82-2-550-8400  
**Homepage** www.daewoong.com  
**E-mail** awi1213@daewoong.co.kr

**Company or Product Introduction**

Established in 1945, Daewoong Pharmaceutical Co., Ltd has the largest prescription drug sales in Korea and envisions it self to become a top 50 global healthcare company by 2015. Daewoong has maintained a steady growth rate in the double digits and has paid surplus dividends for the last 40 years. Now, Daewoong is the No.1 pharmaceutical company in the Korean clinic market. In addition to its product portfolio, which includes 16 blockbuster products, (Gliatirinm Ursa, Albis, Gasmotin..etc) Daewoong has built strong core competency for new drug development and has cultivated a cooperative culture for collaboration with global partners. In the future, Daewoong will expand its global business with its foreign branches and global partners and become a global healthcare group which contribute to improving the quality of life for people worldwide.

**Booth No. 23, 24** BRACCO IMAGING KOREA



**Address** 4F, Shinsung bldg. 233 Yeoksam-ro, Gangnam-gu, Seoul, 135-514, Korea  
**Tel** +82-2-2222-3500  
**Fax** +82-2-2222-3550  
**Homepage** www.bracco.com  
**E-mail** hyunjin.lee@bracco.com

**Company or Product Introduction**

A private-capital Italian multinational in life sciences, the Bracco Group operates through its 4 business units; Imaging, ACIST Medical Systems, Pharma and Health Services. Headquartered in Milan, Italy, Bracco Imaging S.p.A. is one of the World's leading companies in the diagnostic imaging business. Bracco Imaging provides a large portfolio of imaging agents, i.e. products used during diagnostic imaging procedures to enhance anatomic and functional visualization of internal body organ and areas. Also, it operates in over 90 markets worldwide, either directly or indirectly through subsidiaries, joint ventures, license and distribution partnership agreements. As a new business unit of Bracco Imaging, Bracco Imaging S.A. provides quality contrast delivery solutions for state-of-the-art radiology centers, offering proven injection technology. Bracco Imaging Korea, the fully owned subsidiary of Bracco Imaging, markets Iomeron® and Iopamiro® (2 non-ionic monomeric iodinated agents for CT and cardiology) MultiHance® (a high relaxivity agent for MRA and MRI of the CNS, the liver and the breast), ProHance® (a Macrocytic MRI agent) and SonoVue® (a contrast agent for ultrasound exams). Also, Bracco Imaging Korea provides EmpowerCTA® (CT injector), EmpowerMR® (MR injector) and CT Expres™ through a local distributor.

**Booth No. 25**

**LGLS Co., Ltd.**



**Address** LG Gwanghwamun Bldg., 58, Saemunan-ro, Jongno-gu, Seoul 110-783, Korea  
**Tel** +82-2-6924-3747  
**Fax** +82-2-6924-3061  
**Homepage** www.lgls.com  
**E-mail** ksmtim@lgls.com

**Company or Product Introduction**

LGLS was spun off from LG Chem Investment in 2002, becoming a fullfledged affiliate of the LG Group. Our mission is to create maximum longterm shareholder value by specializing in life science R&D and product commercialization. And through our vision to grow our company into a world-class life science organization with a portfolio of top-tier pharmaceutical products, LGLS is building a network of strategic alliances to extend its drug-development and marketing reach. The LG has made a significant investment in life sciences, targeting the field as a major growth-driver for the future. We are therefore equipped with state-of theart technology and manned by highly qualified research staff a combination that is producing innovative drugs that make human lives more rewarding and enjoyable.

**Booth No. 27**

**MERIT MEDICAL**



**Address** Room 901, 9Fl, 33, Seongsuil-ro 10-gil Seongdong-gu, Seoul, Korea  
**Tel** +82-2-2205-0707  
**Fax** +82-2-2205-0706  
**Homepage** www.merit.com  
**E-mail** Julie.roh@merit.com

**Company or Product Introduction**

Merit Medical Systems, Inc. is a worldwide designer, developer, manufacturer and marketer of medical devices used in interventional and diagnostic procedures.

**Main Products**

Merit's embolic products are calibrated, spherical, hydrophilic spheres. These proprietary designs allow more complete and targeted occlusion of the blood vessels feeding a hypervascular tumor or arteriovenous malformation. The hydrophilic surface and spherical shape of the spheres prevent aggregation within microcatheter lumens\* and in the vasculature, promoting ease and accuracy of delivery.

Bearing™ nsPVA Embolization Particles  
Embosphere® Microspheres,  
HepaSphere™ Microspheres

**Booth No. 26**

**SAMJIN PHARM.CO.,LTD**



**Address** [121-739] Wawoosan Ro 121, Mapo Gu, Seoul, Korea  
**Tel** +82-2-3140-0700  
**Fax** +82-2-392-5312  
**Homepage** www.samjinpharm.co.kr  
**E-mail** WEBMASTER@SAMJINPHARM.CO.KR

**Company or Product Introduction**

In order to protect human health from these diseases and fundamentally get rid of diseases, Samjin pharm Co., Ltd secures excellent personnel and latest equipment and continues to challenge the development of excellent pharmaceutical drug by utilizing advanced pharmaceutical information and technology. Through our representative product, platless and other products such as Geworin, Neuracetam and Bamedin, we do not have only contributed to the promotion of health for the mankind but we also have grown as one axis of pharmaceutical industry. Samjin pharm Co., Ltd always strives for a better future on the basis of dignity of human life and company philosophy.

**Booth No. 28**

**Boston Scientific**



**Address** 19F, SEI Tower, 39 Eonju-ro 30-gil, Gangnam-ku, Seoul 135-856, Korea  
**Tel** +82-2-3476 2121  
**Fax** +82-2-3483 1822  
**Homepage** www.bostonscientific.co.kr  
**E-mail** KoreaEndosurgery@bsci.com

**Company or Product Introduction**

We are a leading innovator of medical solutions that improve the health of patients around the world.

Our products and technologies are used to diagnose or treat a wide range of medical conditions, including heart, digestive, pulmonary, vascular, urological, women's health, and chronic pain conditions.

We continue to innovate in these areas and are extending our innovations into new geographies and high-growth adjacency markets.

# Sponsor & Exhibition Directory

## Booth No. 29 RF MEDICAL CO., LTD.



**Address** #505, 254, Beotkkot-ro, Geumcheon-gu, Seoul, Korea  
**Tel** +82-2-2108-4200  
**Fax** +82-2-2113-7999  
**Homepage** www.rfa.co.kr  
**E-mail** overseas@rfa.co.kr

### Company or Product Introduction

RF Medical Co., Ltd has been researching and developing new medical treatment modalities and Electro Surgical devices that are minimally invasive and patient friendly using Radiofrequency since 2003. Our RF Generators are the only multi-purpose RF Ablation generators in the world and their applications are the most various with a vast range of dedicated electrodes.

RF Medical Co., Ltd. strengthened its position as a national best in the field through constant R&D investment and along with a great response our technologies are being progressively recognized in the overseas market where the technical barrier is high.

## Booth No. 30 Standard Sci-Tech



### Standard Sci-Tech Inc.

**Address** 3F Sewoon Bldg., 46 Wangsan-Ro, Dongdaemun-Gu, Seoul, Korea  
 130-823  
**Tel** +82-2-922-3605  
**Fax** +82-2-922-3606  
**Homepage** www.standard4u.com  
**E-mail** dhshin@standardsci-tech.com

### Company or Product Introduction

Since our first product was introduced in the market in 2005, we have been promoting our products globally and positioned ourselves as one of the top stent producers.

Hurdling over the barriers, we have been growing steadily in the competitive international market with the finest quality features and test proven performance results, and the global users, based on their experience, have gladly accepted our proposal to add BONASTENT® on their supply list.

We fully acknowledge that our success was only possible with your complete support and precious comments for us to strive for further improvements, and we will continue to bear in mind that our business is closely connected with all of you.

Look forward to our new products in the market, the results of our endless innovation and creativity, and we sincerely hope to make that connection with you soon

## Booth No. 31 SK chemicals



**Address** 2477, Nambusunhwan-ro, Seocho-gu, Seoul, 137-864 Korea  
**Tel** +82-2-2008-2008  
**Fax** +82-2-2008-2009  
**Homepage** www.skchemicals.com  
**E-mail** skpharma@sk.com

### Company or Product Introduction

Since the establishment of Sunkyung Textiles in 1969, SK Chemicals has grown through continuous change and innovation into a chemical and life sciences enterprise representing South Korea. SK Chemicals' new mission statement says, "We enhance human health and protect the Earth's environment" and we have reorganized our business structure to focus on the two large sectors of green chemicals and life sciences. Our life sciences business, dominated by pharmaceuticals and bio, is anchored by the comprehensive healthcare solutions that cover patient care from diagnosis to treatment and prevention.

The creation of new medicines is bolstering our global position.

## Booth No. 32 Kachu Medico Co., Ltd



**Address** 2F, SMIT B/D, 8, Yeonso-ro 21 gil, Eunpyeong gu, Seoul, 122-050, Korea  
**Tel** +82-2-352-2321  
**Fax** +82-2-357-3187  
**Homepage** www.kachu.co.kr  
**E-mail** kachu@kachu.co.kr

### Company or Product Introduction

Our company was founded in Oct 10th, 1996 and changed company's name from ChoMyung Medical to Kachu Medico Co., Ltd in Mar 12th, 1999. Our company's sales field is Gastroenterology and Radiology field. When we started business, we imported medical products through CBC company(Japan). In 2005 year, we established another company "Kachu Technology Co., Ltd." manufacturing ESD products (Endoscopic Submucosal Dissection Knives). Recently, we got the permission from MFDS to import for e-VIEW which is a C-Arm type fluoroscopic equipment for ERCP from OMEGA MEDICAL IMAGING(US).

**Booth No. 33**

**Cook Medical Korea Ltd.**



**Address** 11th Floor, kyobo Securities Building, 26-4 Yoido-dong,  
Youngdeungpo-Gu, Seoul 150-737, Korea  
**Tel** +82-2-6292-3500  
**Fax** +82-2-6383-9683  
**Homepage** www.cookmedical.com  
**E-mail** kr.orders@cookmedical.com

**Company or Product Introduction**

Since 1963, Cook Group companies have been among the leaders in developing healthcare devices that have improved lives around the world. COOK remains at the forefront of medical research and worldwide sales of products for endovascular therapy, critical care medicine, general surgery, diagnostic and interventional procedures, bioengineered tissue replacement and regeneration, gastroenterology and endoscopy procedures, urology, and obstetrics and gynecology. Our COOK corporate family also includes companies that manufacture specialized industrial parts and offer commercial services in the travel, real estate development and management, and retail fields. COOK is a global company with a global focus - and a global future.

**Booth No. 34**

**Roche Korea Co., Ltd.**



**Address** 17FL GT Tower (East) 411, Seocho-daero, Seocho-gu, Seoul 137-856, Roche Korea  
**Tel** +82-2-561-7200  
**Fax** +82-2-561-7288  
**Homepage** www.roche.co.kr  
**E-mail** Korea.roche@roche.com

**Company or Product Introduction**

Roche Korea was established in 1983 as a Korean subsidiary of the world number one biotech company, Roche group. With Roche Group's strategy to pursue 'innovation' at the top priority, Roche Korea is providing truly differentiated medicines in various areas such as oncology, immunology, hepatology and infectious diseases. Roche Korea contributes to Korean healthcare by holding world class multi-national clinical researches and medical forums.

**Booth No. 35**

**JW Pharmaceutical**



**Address** 2477, Nambusunhwan-ro, Seocho-gu, Seoul, 137-864 Korea  
**Tel** +82-2-840-6747  
**Fax** +82-2-842-2745  
**Homepage** www.jw-pharma.co.kr  
**E-mail** syc67@jw-pharma.co.kr

**Company or Product Introduction**

For the last 60 years ever since its foundation in 1945, on the basis of its founding spirit of "respect for life" and "pioneer spirit" JW Pharmaceutical has been striving to produce and provide innovative new technologies and services heading for healthy lives of human beings. Based on leading competitiveness in the prescription drug market, JW Pharmaceutical has built up strong sales network across the country and superior pipelines in I.V-solutions, antibiotic, cardiovascular, gastrointestinal, nephrology/antianaemic, anticancer and neuropsychiatry. And now, it is pioneering the rapidly growing new field such as diabetes and so on. Moreover, JW Pharmaceutical is making efforts to provide medical equipments, various self modification products and OTC products satisfying the requirements for prevention and diagnosis of diseases.

**Booth No. 36**

**SEMYEONG**



**Address** 3F Taehong Bldg., 23-6, Baumoe-ro 37-gil, Seocho-gu, Seoul, 137-888, Korea  
**Tel** +82-2-577-3443  
**Fax** +82-2-577-0440  
**Homepage**  
**E-mail** kaylin@smmd.co.kr

**Company or Product Introduction**

SeMyeong Medical Device Corp has been established in January 2005. Since then we have grown into one of the leading companies among radiology medical device importers. SeMyeong Medical Device Corp specializes in distributing and importing as well as disposable medical devices for interventional radiology and cardiology. Also, we can provide customized products for customer's individual needs via close relationship with manufacturers of domestic. SeMyeong Medical Device Corp is going forward armed with excellent staffs and with new medical products to be reliable company for customers.

# Sponsor & Exhibition Directory

## Booth No. 37 Jeil Pharmaceutical Co., Ltd.



**Address** 343, Sapyeong-daero, Seocho-gu, Seoul, 137-810, Korea  
**Tel** +82-2-549-7451  
**Fax** +82-2-546-5054  
**Homepage** www.jeilpharm.co.kr  
**E-mail** webmaster@jeilpharm.co.kr

### Company or Product Introduction

- Only PPI which can be taken regardless of food - Dexilant



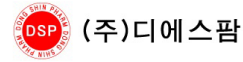
- The First Choice PPI - Lanston



- Mucoprotective agent for the treatment of gastritis



## Other Sponsor DS Pharm



**Address** 1717(Rosedeil Bldg. Suseo dong), #280, Gwangpyeong-ro, Gangnam-gu, Seoul SEOUL 135-744 Rep. of KOREA  
**Tel** +82-2-3413-0218  
**Fax** +82-2-3416-0217  
**Homepage**  
**E-mail** dsp pharm0928@hanmail.net

### Company or Product Introduction

The Medcomp Pro-Fuse CT Ports have been helping practitioners to deliver the highest level of diagnosis and treatment to patients since their inception. Medcomp is now introducing the Dignity line of power injectable ports.

The Dignity Ports are constructed of a MRI-compatible, lightweight engineering plastic that allows for up to 5cc/sec power injection of contrast media for Contrast-Enhanced Computed Tomography(CECT) scans. The ergonomically designed DIGNITY® Ports are available in intermediate and low profile sizes provide increased patient comfort and ease of insertion.

## Other Sponsor Jiin C&T Co., Ltd



**Address** #411, 68, Gangbyeonnyeok-ro 4-gil, Gwangjin-gu, Seoul, Korea  
**Tel** +82-2-453-1226  
**Fax** +82-2-453-9298  
**Homepage** www.jiincnt.com  
**E-mail** jiincnt@nate.com

### Company or Product Introduction

With ire experience, Jiin Commerce & Trading Co., Ltd was established in 1987 to provide specialized service. We have been importing total Endoscopic Instruments and medical equipment with Manometry System from Germany, U.S.A, Japan, and Netherlands to serve convenience. We are dealing in products as ERCP Catheter, Papillotome, Lithotomy Basket, Polypectomy Snare, Biopsy Forceps, Sclerosing Needle, Cleaning Brush etc. We are always doing our best and keeping an open mind to give exceptional services and products for 29 years.

## Other Sponsor TERUMO KOREA Corporation



**Address** 21, Teheran-ro 8 gil, Gangnam-gu, Seoul, 135-933, Korea  
**Tel** +82-2-565-9225  
**Fax** +82-2-565-9224  
**Homepage** www.terumo.co.kr  
**E-mail** yh\_kim@terumo.co.jp

### Company or Product Introduction

Terumo has held up its corporate mission of "Contributing to Society through Healthcare" as its highest value over the full 90 years of its history. In keeping with this mission, we consider it our duty to develop excellent products and ensure their stable supply, and to work proactively to address various issues surrounding healthcare.

**Other Sponsor**

**Intervention Medical Co., Ltd.**



**Address** Rm 202, Chungang B/D, #454-9 Seongnae dong, Gangdong gu, Seoul, 134-848, Korea  
**Tel** +82-2-747-4594  
**Fax** +82-2-747-4597  
**Homepage**  
**E-mail** sophialee@intervention-m.com

**Company or Product Introduction**

Intervention Medical Co.,Ltd. is a leading provider of innovative medical devices used by interventional radiologists, cardiologist, and other physicians for the minimally invasive diagnosis and treatment of cancer and peripheral vascular disease.

The company was founded in Seoul in 2005 and has been the company's consistent ability to successfully develop and bring to market new technologies and products.

**Main products**

- Microcatheter set
- PTA Balloon
- PTCA Balloon
- G/W